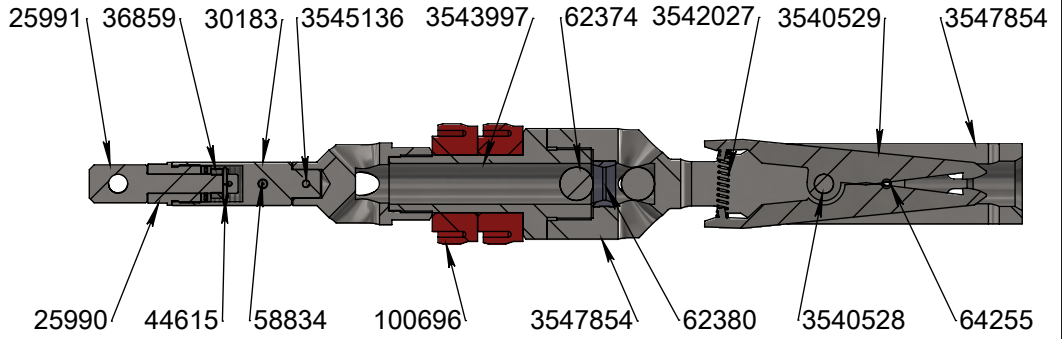
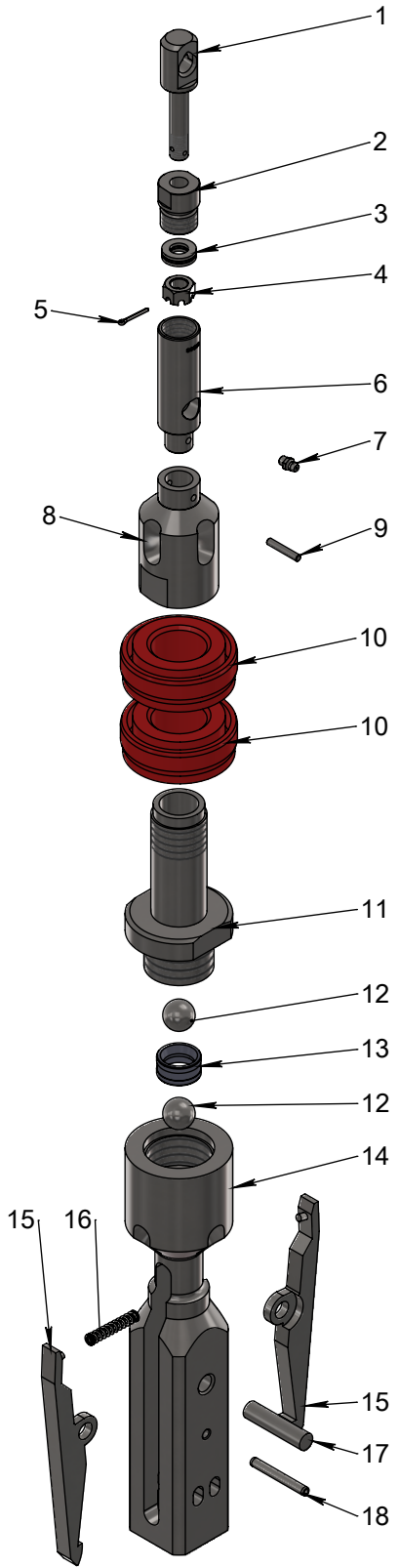



Item #	Part #	Description	Unit Weight
1-18	3547855	Quick Pump-In Overshot, HQU	16.854

Item #	Part Number	Description	Qty	Unit Weight
1	3547854	Head, HQU Overshot L/I	1	9.612
2	100696	Pump-in Lip Seal, HQ	2	0.219
3	3547853	Upper Overshot Body, HQU	1	1.707
4	3543997	Seal Seat, HQU	1	2.370
5	3542027	Spring, Lifting Dog	1	0.008
6	62380	Landing Indicator Bushing	1	0.010
7	62374	22mm Chrome Steel Ball	2	0.097
8	25990	Cable Swivel Collar	1	0.247
9	25991	Eye Bolt, Overshot	1	0.351
10	25986	Thrust Bearing	1	0.032
11	44615	Cotter Pin, 3/32" x 3/4"	1	0.002
12	3540529	Lifting Dog, NQ/HQ/PQ	2	0.568
13	30183	Cable Swivel Body, U/G	1	0.560
14	36859	1/2-20 Plain Finish Steel Slotted Hex Nut	1	0.034
15	3545136	Shear Pin 3/16 X 1-1/8 LG	1	0.009
16	3540528	Pin, Plain 1/2" X 2.125	1	0.119
17	58834	1/4-28 Straight Steel Zinc Self-Tapping Grease fitting	1	0.01
18	64255	1/4" x 2" Plain Finish Steel Slotted Spring Pin	1	0.0168



SI NON SPÉCIFIÉ LES DIMENSIONS SONT EN POUCES ET LES TOLERANCES: FRACTIONS DECIMALES ANGLES $\pm 1/16"$ $.XX \pm 0.05$ $\pm 1\text{deg}$ $.XXX \pm 0.005$		CE DOCUMENT ET TOUTES LES INFORMATIONS QU'IL CONTIENT SONT LE PROPRIÉTÉ DE USINAGE X-SPEC INC. TOUTE REPRODUCTION EN TOTALITÉ OU PARTIELLE EST INTERDITE SANS L'AUTORISATION DE USINAGE X-SPEC INC.		PROJET: Quick Pump-In Overshot, HQU	
DESSINÉ PAR: Shannon Hurtubise		2024-05-22		3547855	
Poids/Weight 16.854 lbs		ÉCHELLE: 1:5		SIZE # DE DESSIN: REV.	
		www.xspec.ca		NOM DU FICHIER: C6273.slddrw FEUILLE 2 DE 2	